



Complete Research  
Solutions

PRODUCT MANUAL

- Antibodies ● ELISA Kit ● Proteins & Peptides;
- Bioactive Compounds ● Molecular Biology ● Laboratory Consumables
- Custom Gene Editing & Cell Engineering ● Custom Antibody Service
- Custom Recombinant Protein Service ● Custom Peptide Service ● Custom ELISA Service ● Other CRO Services

**P1 About Us**

**P2 Catalog Products**

P2 Antibodies

P3 ELISA Kits

P3 Recombinant Proteins

P3 Peptides

P4 Molecular Biology & NGS Lib Prep Kits

P5 Biochemicals

**P6 Custom Services**

P6 Gene Editing & Cell Engineering

P13 ELISA Service

P13 Antibody Service

P14 Protein Expression Service

P15 Peptide Service

P15 Other CRO Service

**P16 Our Core Partners**

P16 Top Publications

P16 Business Strategic Partner

**P16 Order Support**

## ABOUT US

EJOLIFE was founded in Berlin of Germany.

September of 2020

February of 2021

First CRO laboratory was established in Berlin.

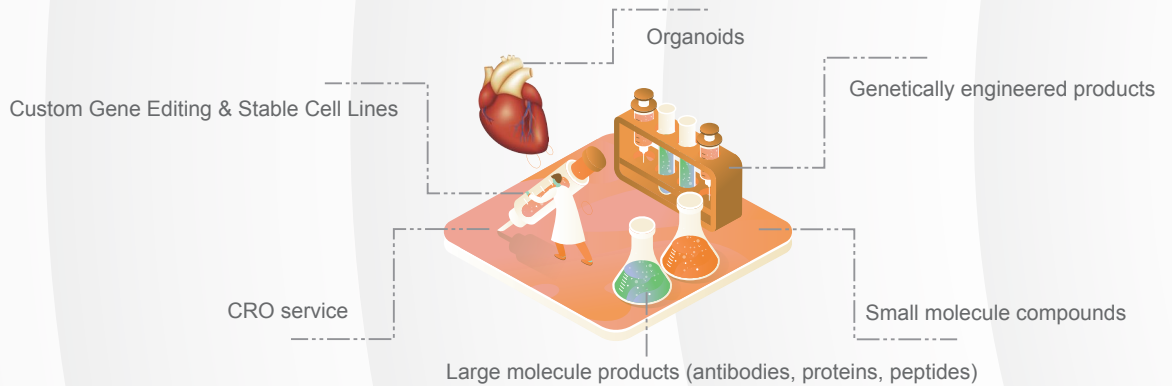
April of 2021

EJOLIFE established cooperation with other world leading biotech companies.

July of 2021

Second CRO laboratory was established in Shanghai.

## COMPANY OVERVIEW



## CRO SERVICES











## CUSTOM SERVICES

### 1. Gene Editing & Cell Engineering

Our partner Ubigen developed CRISPR-UTM technology which is 10 times more efficient than the general CRISPR. 100 types of cells have been successfully edited. Successfully genome editing including knockout (KO), point mutation (PM), and knockin (KI) are guaranteed.

10

**10X**

Exclusive innovation, 10 times more efficient in gene-editing.

100

**100 types**

Successfully edit genes on more than 100 types of cell lines..



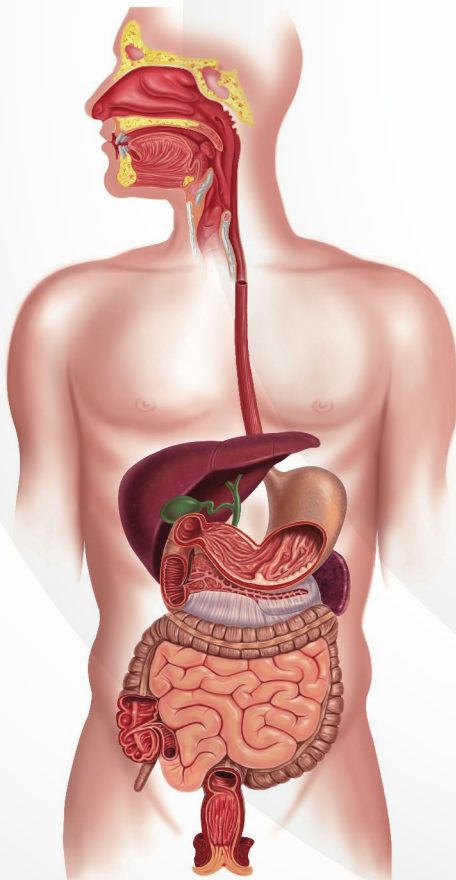
**Versatility**

Easily generate knockout (KO), point mutation (PM) and knockin (KI) in vitro and in vivo.



**NO risk**

CRISPR-U™ offers a 100% mutation guarantee. No mutation, no charge



**Urinary System**

Human bladder carcinoma cell line (TCCSUP)  
 Human bladder carcinoma cell line (5637)  
 Human Bladder Transitional Cell Carcinoma Cell Line (T24)  
 Human Adrenal Cortical Adenocarcinoma Cell Line  
 Mouse Mesangial Polyoma Cell Line  
 Rat Glomerular Mesangial Cell Line  
 Human Kidney Cell Line  
 Rhesus Monkey Kidney Cell Line  
 Human Renal Carcinoma Cell Line  
 Human Embryonic Kidney Cell Line(HEK293)  
 Human Embryonic Kidney Cell Line(derived from 293)  
 Human prostate carcinoma cell line (22RV1)



**Skeleton, Articul, Soft Tissue, Derma System**

Human Osteosarcoma Cell Line (MG63)  
 Human bone osteosarcoma epithelial cell line (U-2 OS)  
 Human fibrosarcoma cell line (HT1080)  
 Human Osteosarcoma Cell Line  
 Immortalized Human Epidermal Cell Line  
 Mouse Chondrocyte Progenitor Cell Line  
 Ewing's Sarcoma Cell Line  
 Human Malignant Melanoma Cell Line  
 Human malignant melanoma cell line (A-375)  
 Murine melanoma cell line (B16-F10)  
 Mouse myeloma cell line (Sp2/0-Ag14)





## Digestive System

Human Colon Cancer Cell Line (HCT116)  
 Human Colon Cancer Cell Line (SW480)  
 Human Colon Cancer Cell Line (SW620)  
 Human Colon Cancer Cell Line (HT-29)  
 Human Colon Cancer Cell Line (LoVo)  
 Human colon carcinoma cell line (RKO)  
 Human caucasian colon adenocarcinoma cell line (COLO 205)  
 Murine colorectal carcinoma cell line (CT26.WT)  
 Human colon adenocarcinoma cell line (DLD-1)  
 Human colorectal adenocarcinoma cell line (NCI-H716)  
 Human colorectal adenocarcinoma cell line (Caco-2)  
 Human colon carcinoma cell line (T84)  
 Human liver cancer cell line (Hep G2)  
 Human Hepatoma CII Line (Hep3B)  
 Human hepatocellular carcinoma cell line (HuH-7)  
 Human Hepatocellular Carcinoma Cell Line  
 Rat Hepatoma Cell Line  
 Rat Hepatoma Cell Line  
 Human Primary Colon Cancer Cell Lines  
 Human Gastric Cancer CII Line (HGC-27)  
 Human gastric cancer cell line (AGS)  
 Human Esophageal Squamous Carcinoma Cell Line  
 Human Esophageal Squamous Carcinoma Cell Line (KYSE :150)  
 Human renal cell carcinoma cell line (786-0)  
 Porcine small intestinal epithelial cell line  
 African green monkey kidney cel(Vero)



## Endocrine System

Human Breast Cancer Cell Line (MDA-MB-231)  
 Rat Breast Cancer Cell Line (4T1)  
 Human Pancreatic Carcinoma Cell Line(PANC-1)  
 Human breast cancer cell line (MCF-7)  
 Human Breast Adenocarcinoma Cell Line (SK-BR-3)  
 Human Metastatic Pancreatic Adenocarcinoma Cell Line (AsPC-1)  
 Human Pancreatic Carcinoma Cell Line(MIA PaCa-2)  
 Human Pancreatic Carcinoma Tumor Cell Line  
 Mouse Pancreatic Carcinoma Cell Line (PANC-1)  
 Human Prostate Cancer Tumor Cell Line  
 Human prostate cancer cell line (PC3)  
 Human prostate cancer cell line (LNCaP)  
 Mouse Acinar Pancreatic Cell Line (266-6)  
 Human pancreatic cancer cell line (BxPC-3)  
 Human breast cancer cell line (T-47D)



## Respiratory System

Human Lung Cancer Cell Line (A549)  
 Human Lung Cancer Cell Line (Calu-1)  
 Human Lung Cancer Cell Line (Epithelium)  
 Lewis lung carcinoma (LLC)  
 Human Non-small Cell Lung Carcinoma Cell Line (H1299)  
 Human Non-small Cell Lung Carcinoma Cell Line (HCC827)  
 Human Lung Adenocarcinoma Cell Line  
 Human Bronchial Epithelial Cell Line (BEAS-2B)  
 Human Bronchial Epithelial Cell Line  
 human embryonic lung fibroblasts  
 Human fetal lung fibroblast cell line (MRC-5)  
 Human hypopharyngeal carcinoma cell line (FaDu)  
 Chinese hamster lung cells (V79)



## Circulatory System

Human Vulvar Leiomyosarcoma Cell Line  
 Rat Cardiac Myocytes (H9C2)  
 Human Coronary Artery Endothelial Cell line (HCAEC)  
 Mouse Myoblast Cell Line (C2C12)



## Reproductive System

Human Cervical Carcinoma Cell Line (HeLa)  
 Human Ovarian Adenocarcinoma Cell Line  
 Mouse Embryonic Osteoblast Precursor Cells  
 Mouse Embryonic Fibroblasts (Preadipocytes)  
 Mouse Embryonic Fibroblasts (NIH/3T3)  
 Chinese Hamster Ovary Cell Line(CHO-K1)



## Ocular, Otolaryngologic and Oral System

Rat Muller Cell Line (rmc-1)  
 Human Tongue Squamous Carcinoma Cell Line  
 Human Nasopharyngeal Carcinoma Cell Line (C666-1)  
 Human Nasopharyngeal Carcinoma Cell Line (cne2z)







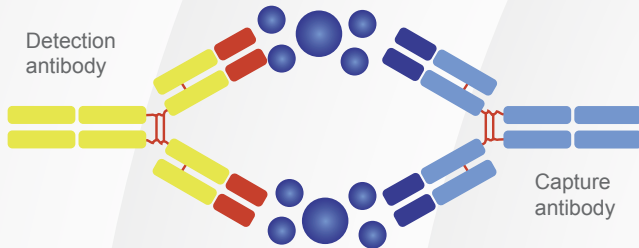
Services		Turnaround	Deliverable
KO cell pool	293T	20-30 business days	2 cell pools, 2 vials (5*10 <sup>-5</sup> )/pool
	Hela, HCT116, NCI-H1299, RKO, 4T1, B16-F10, CHO-K1	20-30 business days	2 cell pools, 2 vials (5*10 <sup>-5</sup> )/pool
	Other cell line	20-30 business days	2 cell pools, 2 vials (5*10 <sup>-5</sup> )/pool

Services		Turnaround	Deliverable
KO cell clone	293T, A549, HCT116	45-65 business days	≥1 Full-allele KO clone, 1×10 <sup>6</sup> /vial, 2vials/clone
	Hela, 4T1, H9C2, RAW264.7, NCI-H1299	45-65 business days	≥1 Full-allele KO clone, 1×10 <sup>6</sup> /vial, 2vials/clone
	I, II, III graded cell line in 100 cells list	55-75 business days	≥1 Full-allele KO clone, 1×10 <sup>6</sup> /vial, 2vials/clone
	IV graded cell line in 100 cells list	65-85 business days	≥1 Full-allele KO clone, 1×10 <sup>6</sup> /vial, 2vials/clone
	V graded cell line in 100 cells list	90-120 business days	≥1 Full-allele KO clone, 1×10 <sup>6</sup> /vial, 2vials/clone
	Cell line outside of 100 cells list	60-80 business days	≥1 Full-allele KO clone, 1×10 <sup>6</sup> /vial, 2vials/clone
	mouse ES	3-4 months	≥1 Full-allele KO clone, 1×10 <sup>6</sup> /vial, 2vials/clone
	human IPS/hESC	3-4 months	≥1 Full-allele KO clone, 1×10 <sup>6</sup> /vial, 2vials/clone

Services		Turnaround	Deliverable
Point mutation cell line	293T, HCT116, H9C2, 4T1, HeLa, A549	12-20 weeks	≥1 Heterozygous clone, 1×10 <sup>6</sup> /vial, 2vials/clone
	I, II graded cell line in 100 cells list	12-20 weeks	≥1 Heterozygous clone, 1×10 <sup>6</sup> /vial, 2vials/clone
	Other cell lines	16-24 weeks	≥1 Heterozygous clone, 1×10 <sup>6</sup> /vial, 2vials/clone
	human IPS/hESC	16-24 weeks	≥1 Heterozygous clone, 1×10 <sup>6</sup> /vial, 2vials/clone

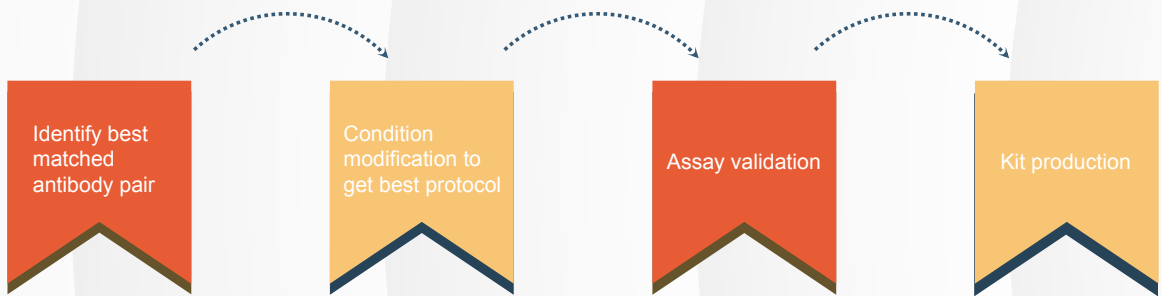
Services		Turnaround	Deliverable
KI cell line	293T, HCT116, H9C2, 4T1, HeLa, A549 (Reporter KI)	12-20 weeks	≥1 Heterozygous clone, 1×10 <sup>6</sup> /vial, 2vials/clone
	I, II graded cell line in 100 cells list (Reporter KI)	12-20 weeks	≥1 Heterozygous clone, 1×10 <sup>6</sup> /vial, 2vials/clone
	Other cell lines (Reporter KI)	16-24 weeks	≥1 Heterozygous clone, 1×10 <sup>6</sup> /vial, 2vials/clone
	I, II graded cell line in 100 cells list (other KI)	3-5 months	≥1 Heterozygous clone, 1×10 <sup>6</sup> /vial, 2vials/clone
	Other cell lines (other KI)	3-5 months	≥1 Heterozygous clone, 1×10 <sup>6</sup> /vial, 2vials/clone

## 2.ELISA Service



Matched antibody pair is the key of successful ELISA assay. We provides the most suitable matched pairs for your immunoassay.

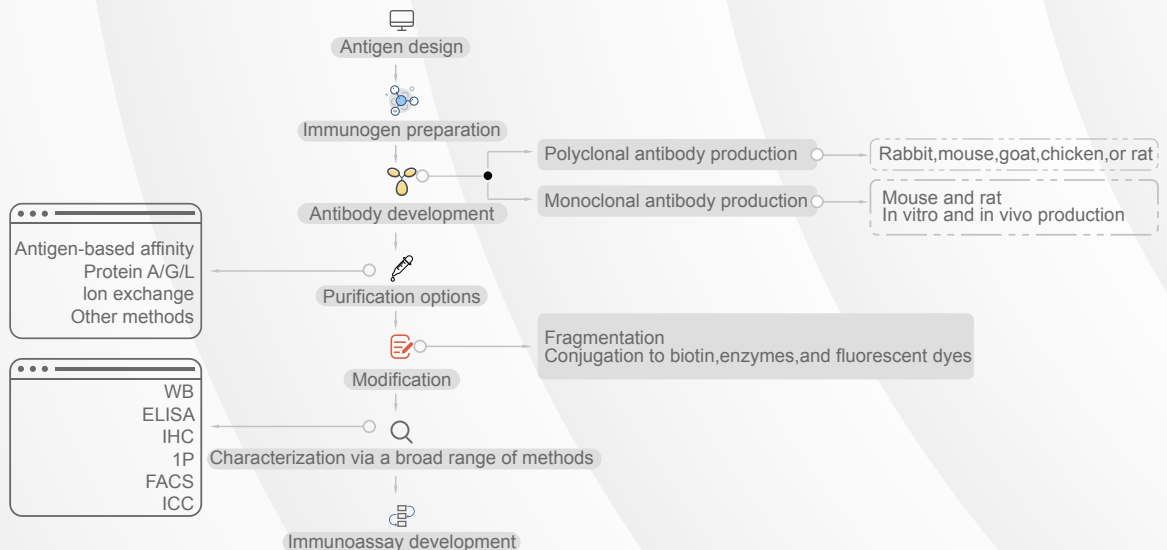
### Process:



## 3.Antibody Service

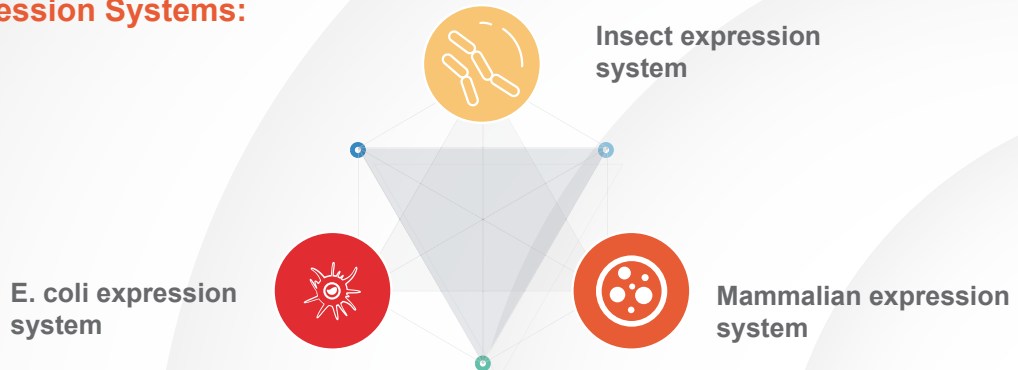
### Process:

A Guaranteed, Customized, One Stop Service

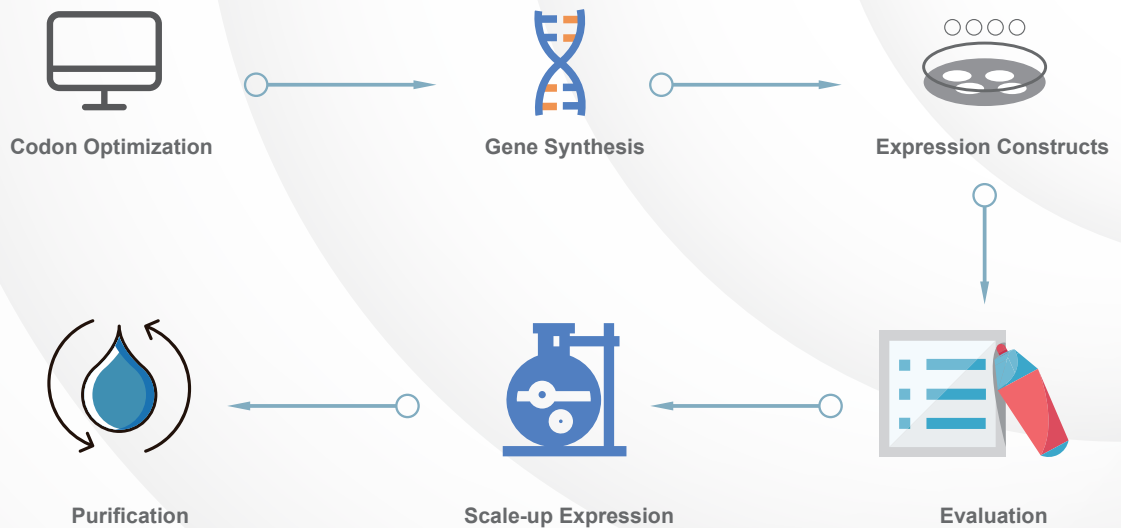


## 4. Protein Expression Service

### Expression Systems:



### Process:









# CATALOG



Sales: (0)159 0684 5025  
Tech: +49 (0)309 489 2020



[sales@ejolife.de](mailto:sales@ejolife.de)  
[tech@ejolife.de](mailto:tech@ejolife.de)



Robert-Rössle-Str. 10,  
13125 Berlin, Germany





## ABOUT US

---

+49 (0)3094892040

E-mail: [contact@ejolife.de](mailto:contact@ejolife.de)

Website: [www.ejolife.de](http://www.ejolife.de)

Address: Robert-Rössle-Str. 10,  
13125 Berlin, Germany